

ZENITH



FURNITURE SOLUTIONS

HOME | OFFICE | EDUCATIONAL | HEALTH CARE | RETAIL | CAMPING FURNITURE

www.zenithmetaplast.com



Manufacturing Excellence

At Zenith , manufacturing is a passion. This passion has driven us to set up top-class manufacturing facilities with extreme operational efficiencies in record times. Over period of time, we have earned an enviable reputation for flawless project execution and management.

Zenith has set benchmark in Luggage industry in India with Integration of unique product designed to maximise value addition. This project was both engineering and execution challenge and has been started in flawless manner in record time. We have also improved our competitiveness and feed flexibility by building a complete supply chain network.

Manufacturing divisions of Zenith not only create thousands of jobs for skilled workforce, but also train unskilled workers, helping create a strong talent pool. Every product we create with the 'Made in India' tag is a source of great honour and pride.

Our state of the art manufacturing facility including luggage & furniture is spread over 8,00,000 Sqft.

“If you work with determination and perfection, success will follow.”

VENUGOPAL B N
Managing Director

Our State Of The Art Manufacturing Facility







QUALITY POLICY & CERTIFICATIONS :

Zenith Metaplast is ISO 9001:2000 registered. Our approach to quality assurance involves a total management commitment among all operating departments, through all stages of our process, to prevent and eliminate defects.

Each of us is empowered with the responsibility to effect process improvement and continuous enhancement of production to implement our rigorous quality standards.

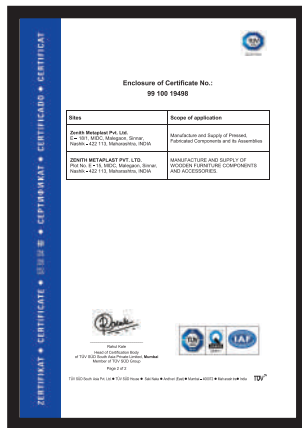
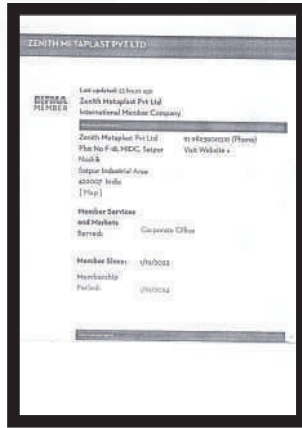
SAFETY :

There is an unwavering commitment to safety in all our operations. Zenith adopts latest and best technologies for all new projects, invests in cutting edge technology for safe and reliable operations. The safety culture is reinforced through training, updation of processes and engaging some of the best experts to improve safety systems. Continued focus on asset renewal ensures that all our assets are safe and keeping with new technologies for improving safety.

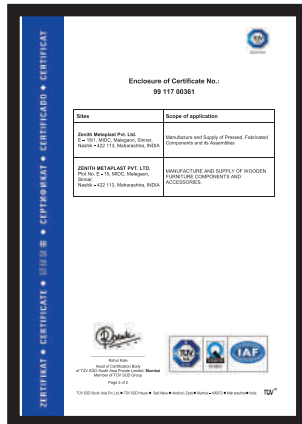
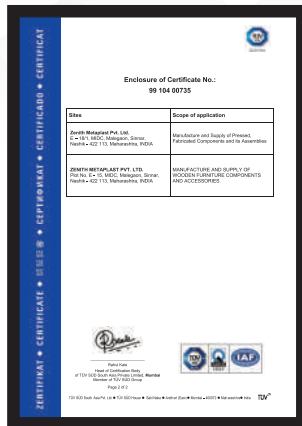
LIST OF CERTIFICATIONS :

1. Quality Management system ISO 9001:2015 (QMS)
2. Environmental Management System ISO 14001:2015 (EMS)
3. Occupational Health and Safety Management System ISO 45001:2018 (OH&S MS)
4. Energy Management System ISO 50001:2018
5. Certification Of Compliance Greenguard Gold
6. Certificate Of Registration Global-Greenguard Safe
7. Certificate Of Registration BIFMA X 5.5-2021 & BIFMA X 5.9 -2012
8. Certificate Of Registration BIFMA X 5.5-2021
9. Certificate Of Registration BIFMA X 5.1-2017
10. Certificate Of Registration BIFMA X6.1-2018
11. CII's Indian Green Building Council (IGBC) Registration- Membership Corporate
12. ECOLABEL- CII's GreenPro Certification
13. Ministry of Micro, Small & Medium Enterprises (MSME) "ZED GOLD Certificate"
14. SA 8000 2014 (Social Accountability)
15. AIOTA Membership (Corporate)
16. BIFMA Membership (Corporate)

Certificates



Certificates



Our Esteemed Clients

Reliance



IIT Tirupati

Indian Institute of Technology Tirupati



शरीरमाद्यं खलु धर्मसाधनम्



HOME



Bed



Queen Bed
Material Subtype: Engineering Wood
W x D x H: 1560W x 2130D x 800H



King Bed
Material Subtype: Engineering Wood
W x D x H: 1905W x 2180D x 910H



King Bed
Material Subtype: Engineering Wood
W x D x H: 1905W x 2180D x 910H



King Bed
Material Subtype: Engineering Wood
W x D x H: 1905W x 2180D x 910H



Single Bed - Kids
Material Subtype: Engineering Wood
W x D x H: 960W x 1940D x 800H



Single Bed - Kids
Material Subtype: Engineering Wood
W x D x H: 1025W x 2130D x 1595H

Wardrobe



Single Door
Material Subtype: Engineering Wood
W x D x H: 475W x 380D x 1790H



3 Door Wardrobe Without Mirror (Dual Tone)
Material Subtype: Engineering Wood
W x D x H: 1180W x 380D x 1800H



4 Door Wardrobe With Mirror (Dual Tone)
Material Subtype: Engineering Wood
W x D x H: 1575W x 380D x 2030H



Kitchen Cabinet 01
Material Subtype: Engineering Wood
W x D x H: 1190W x 400D x 1420H



Kitchen Cabinet 02
Material Subtype: Engineering Wood
W x D x H: 860W x 380D x 790H



Kitchen Cabinet 03
Material Subtype: Particle Board
W x D x H: 810W x 400D x 1830H



Kitchen Cabinet 04
Material Subtype: Engineering Wood
W x D x H: 1200W x 400D x 1810H



Kitchen Cabinet 05
Material Subtype: Engineering Wood
W x D x H: 1200W x 400D x 1810H

Center Table



Coffee Table (Dual Tone) 01
Material Subtype: Engineering Wood
W x D x H: 600W x 600D x 400H



Coffee Table (Dual Tone) 02
Material Subtype: Engineering Wood
W x D x H: 800W x 800D x 400H



Coffee Table (Dual Tone) 03
Material Subtype: Engineering Wood
W x D x H: 1015W x 530D x 455H



Kids Table (Flash)
 Material Subtype: Engineering Wood
 W x D x H: 915W x 610D x 990H



Coffee Table (Greg)
 Material Subtype: Engineering Wood
 W x D x H: 800W x 400D x 450H



Bed Side Table (Dual Tone)
 Material Subtype: Engineering Wood
 W x D x H: 440W x 440D x 610H



Living Side Table (Dual Tone)
 Material Subtype: Engineering Wood
 W x D x H: 400W x 400D x 450H



Console Table (Dual Table)
 Material Subtype: Engineering Wood
 W x D x H: 750W x 300D x 750H



Kids Table
 Material Subtype: Engineering Wood
 W x D x H: 1020W x 400D x 750H



TV Units



TV Unit Full Display TV Unit (Dual Tone) 01
Material Subtype: Engineering Wood
W x D x H: 1400W x 400D x 1410H



TV UNIT STANDALONE LOW 02
Material Subtype: Engineering Wood
W x D x H: 1370W x 150D x 1030H



TV Unit (Dual Tone) 03
Material Subtype: Engineering Wood
W x D x H: 650W x 400D x 350H



TV Unit Standalone Low 04
 Material Subtype: Particle Board
 W x D x H: 1200W x 400D x 635H



TV Unit Standalone Low 05
 Material Subtype: Particle Board
 W x D x H: 1170W x 350D x 410H



TV Unit Full Display (Dual Tone) 06
 Material Subtype: Engineering Wood
 W x D x H: 1800W x 380D x 1800H



Bar Units



Bar Storage
Material Subtype: Engineering Wood
W x H x D: 860W x 380D x 790H



Bar Cabinet 01
Material Subtype: Engineering Wood
W x D x H: 600W x 500D x 1320H



Bar Cabinet 02
Material Subtype: Engineering Wood
W x D x H: 470W x 470D x 1800H



JUTE
Material Subtype: Solid Wood



Benches 2 Door With Seat
Material Subtype: Engineering Wood
W x H x D: 785W x 380D x 480H



Benches 3 Door With Seat
Material Subtype: Engineering Wood
W x D x H: 1200W x 395D x 490H

Dressing



Dressing Table 01
Material Subtype: Engineering Wood
W x D x H: 1020W x 230D x 1470H



Dressing Table 02
Material Subtype: Engineering Wood
W x D x H: 1020W x 230D x 1470H

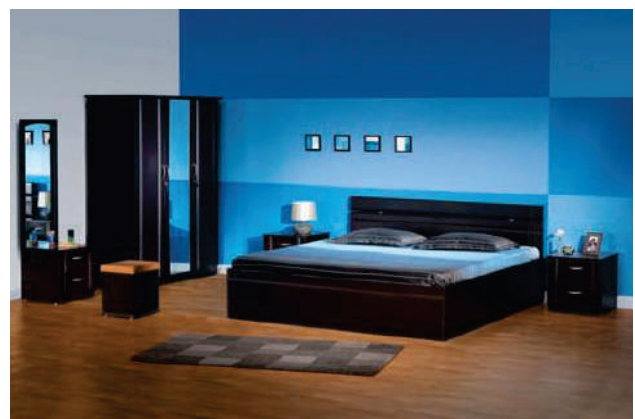
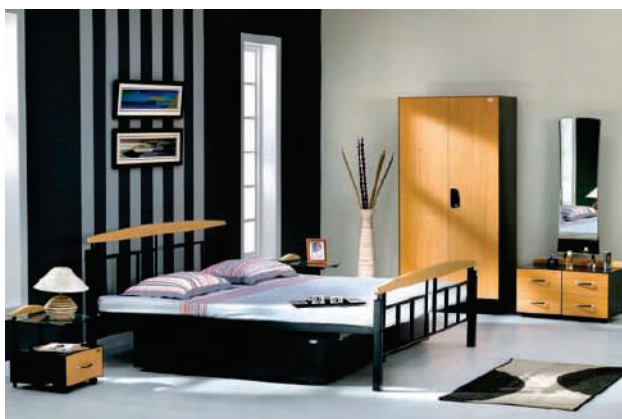


Dressing Table 03
Material Subtype: Engineering Wood
W x H x D: 380W x 1195H x 110D



Dressing Table 04
Material Subtype: Engineering Wood
W x H x D: 400W x 1800H x 700D

Bedroom Sets



Material Specifications :

1. Engineering Wood with MFC finish
2. MDF with laminate
3. MDF with membrane
4. Plywood with paint
5. Plywood with laminate

Kitchen Facia / Shutters



Laminate Shutter

Base Material: MDF/HDF/Plywood
Edge-banded with – PVC tapes, aluminium or wooden
beadings to finish and seal the edges.
Value For Money:
High Gloss / Wooden texture finished laminate with
perfectly matching edge banding fixed with PUR adhesive
glue kitchen modern looks.

Acrylic Shutter

Base Material: HDHMR / PLYWOOD
OPTICAL GRADE ACRYLIC SHEET
Supergloss Acrylic Shutter:
Gives a contemporary look.
Perfectly Matched Edge band:
Use of state-of-the-art edge banding machines with glue
on acrylic panels to make it waterproof for strong bonding.

PU-Coated Shutter

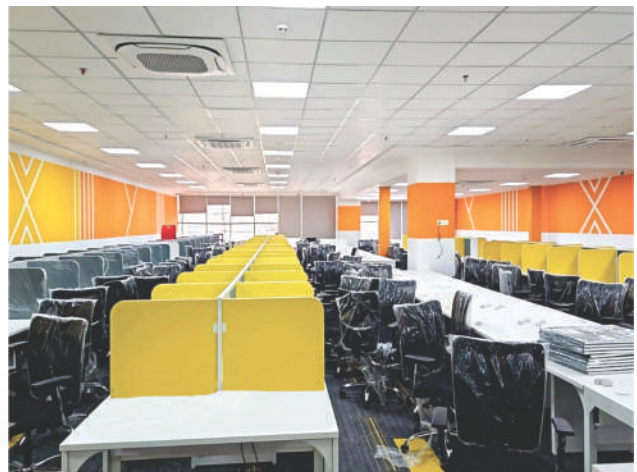
Base Material: HDHMR/PLYWOOD
ITALIAN PAINT / LACQUER.
PERFECT JOINT LESS GLOSSY / FINISH

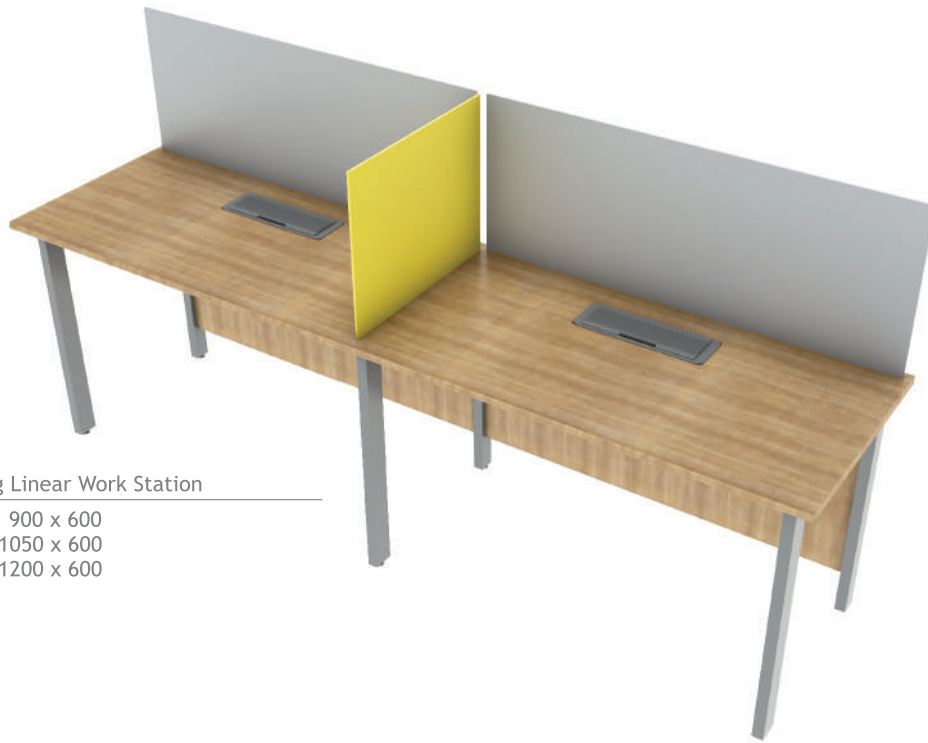
Membrane Shutter

Base Material: HDHMR/MDF
Membrane Foil

OFFICE







WS-L1 | C-Leg Linear Work Station

Size : 900 x 600
1050 x 600
1200 x 600



WS-L2 | C-Leg Linear Back to Back Work Station

Size : 900 x 600
1050 x 600
1200 x 600



WS-L3 | V-Leg Linear Work Station-Back to Back

Size : 900 x 600
1050 x 600
1200 x 600



WS-L4 | V-Leg Linear Work Station-Back to Back

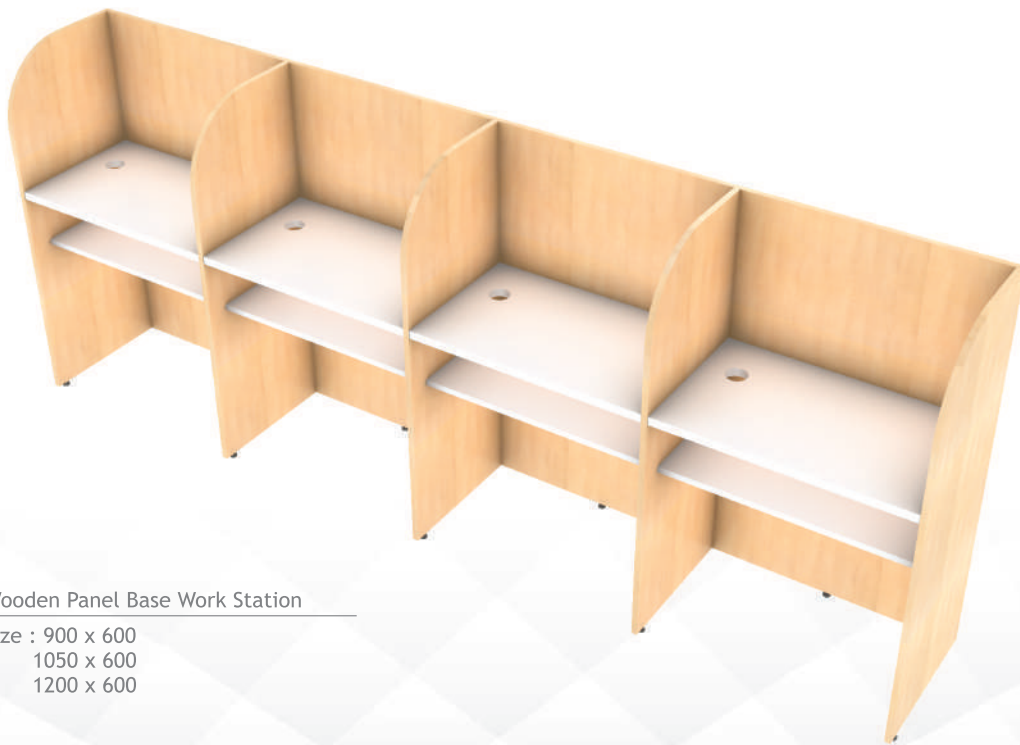
Size : 900 x 600
1050 x 600
1200 x 600





WS-L5 | D-Leg Linear Work Station

Size : 900 x 600
1050 x 600
1200 x 600



WS-L6 | Wooden Panel Base Work Station

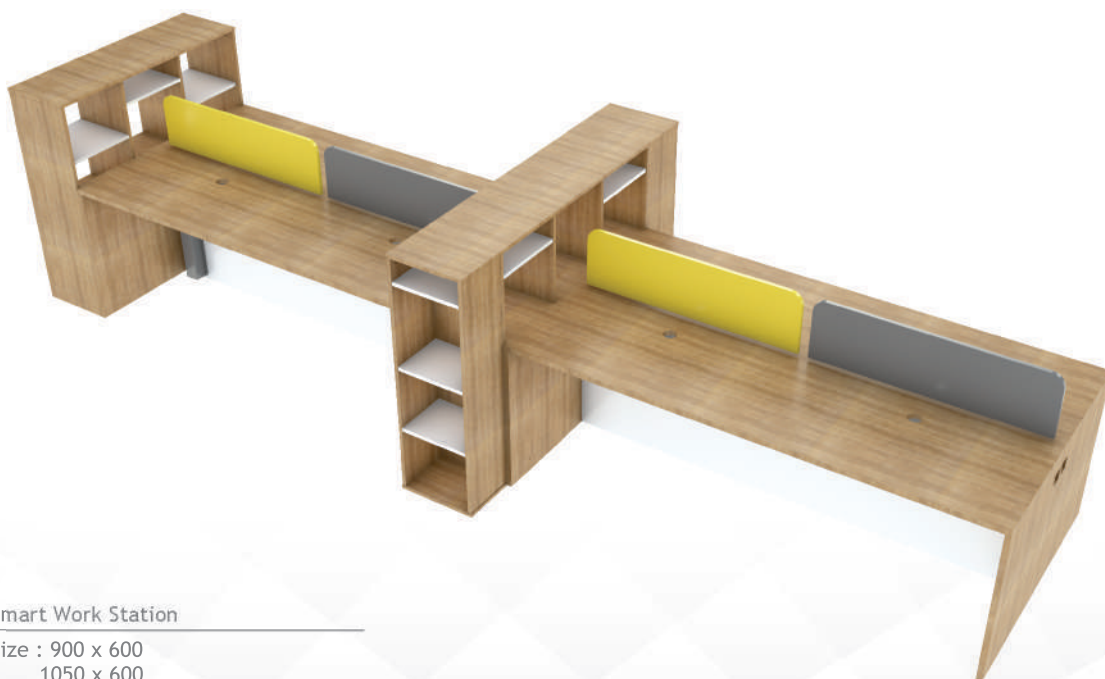
Size : 900 x 600
1050 x 600
1200 x 600





WS-L7 | Wooden Panel Base Work Station-BB

Size : 900 x 600
1050 x 600
1200 x 600



WS-L8 | Smart Work Station

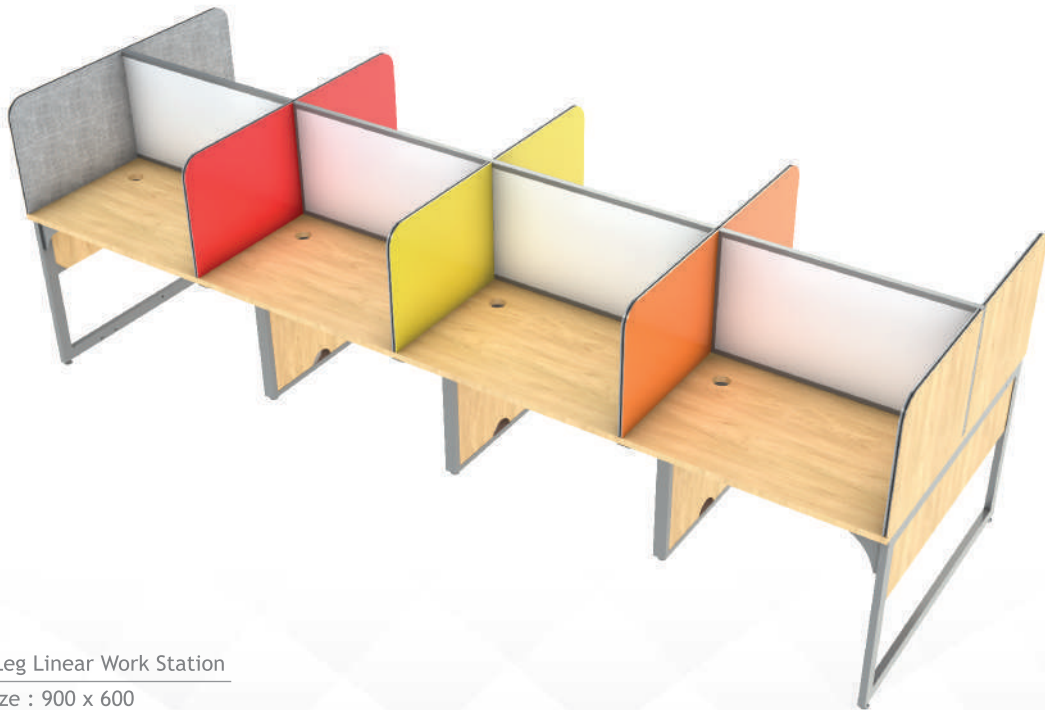
Size : 900 x 600
1050 x 600
1200 x 600





WS-L9 | Linear Work Station with Aluminium Partition

Size : 900 x 600
1050 x 600
1200 x 600



WS-L10 | D Leg Linear Work Station

Size : 900 x 600
1050 x 600
1200 x 600



Curvilinear Desking



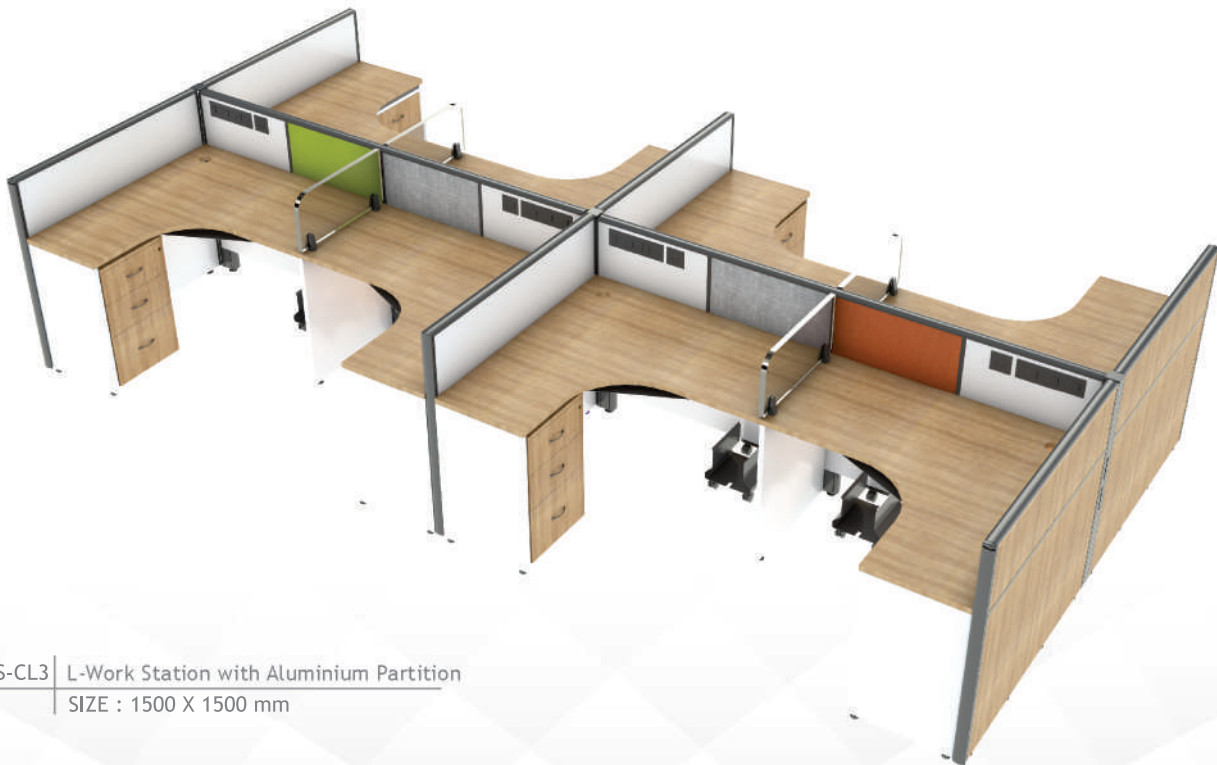
WS-CL 1 | D Leg-L-Work Station
SIZE : 1500 X 1500 mm



WS-CL 2 | D Leg-L-Work Station BB
SIZE : 1500 X 1500 mm



WS-CL3 | D-Leg-L-Work Station-BB
SIZE : 1500 X 1500 mm

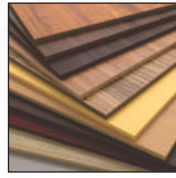


WS-CL3 | L-Work Station with Aluminium Partition
SIZE : 1500 X 1500 mm

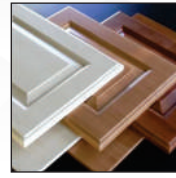


Material Specifications & Features of Work Station

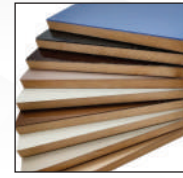
TABLE TOP MATERIAL



Engineering Wood with MFC Finish



MDF with Membrane Finish



Laminated Finish

PARTITION-HEIGHT-300/450



Fabric - Pinup/Magnetic / White Board



Back Painted Glass



Tinted Glass

DIVIDER



Fabric



PLPB



Foam Back Fabric

UNDER STRUCTURE / LEGS



Metal Powder Coated



Wooden Under Structure

WIRE MANAGEMENT



Access Flap



Wire Manager



Pop Up Box



CF - 01

Material : Engineering Wood / MDF
Finish : MFC / MEMBRANE



CF - 02

Material : Engineering Wood / MDF
Finish : MFC / MEMBRANE



CF - 03

Material : Engineering Wood / MDF
Finish : MFC / MEMBRANE



CF - 04

Material : Engineering Wood / MDF
Finish : MFC / MEMBRANE





CF - 05

Material : Engineering Wood / MDF
Finish : MFC / MEMBRANE



CF - 06

Material : Engineering Wood / MDF
Finish : MFC / MEMBRANE



Office Table



TT | Training Table
Material : Engineering Wood / MDF



OT-01 | Manager Table
Material : Engineering Wood / MDF



OT-02 | MD Cabin - Return Storage
MATERIAL : Engineering Wood / MDF



OT-03 | Auditor Desk
MATERIAL : Engineering Wood / MDF





OT-04 | Auditor Desk
MATERIAL : Engineering Wood / MDF



OT-05 | Auditor Desk
MATERIAL : Engineering Wood / MDF



Office Storage



PD-BF | 2 Drawer Pedestal
Material : Engineering Wood / MDF



PD-BBB | 3 Drawer Pedestal
Material : Engineering Wood / MDF



PD-OS | Open Shelf Pedestal
Material : Engineering Wood / MDF



ST-01 | Side Storage
Material : Engineering Wood / MDF



ST-02 | Chest Of Drawer
Material : Engineering Wood / MDF



ST-03 | Over Head Storage
Material : Engineering Wood / MDF

Storage & Filing Cabinet



ST - 04 | Medium Height 3 Door Storage



ST - 05 | Sliding Door Storage



ST - 06 | 3 Door Storage



MPD - BF | 2 DRAWER METAL PEDESTAL



MPD-BBB | 3 DRAWER METAL PEDESTAL



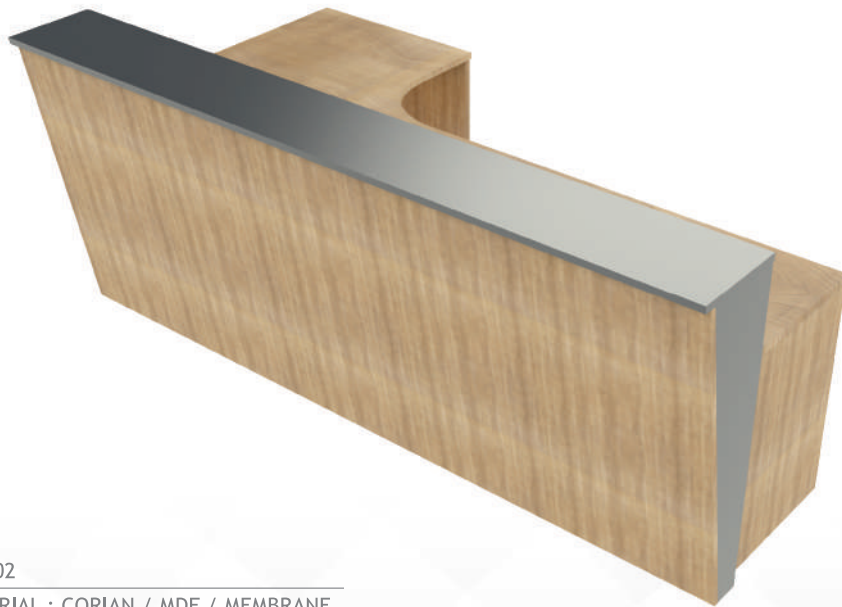
MPD-FF | DRAWER METAL PEDESTAL

Reception Table



RT - 01

MATERIAL : CORIAN / MDF / MEMBRANE
PLY / ENGINEERING WOOD



RT - 02

MATERIAL : CORIAN / MDF / MEMBRANE
PLY / ENGINEERING WOOD



RT - 03

MATERIAL : CORIAN / MDF / MEMBRANE
PLY / ENGINEERING WOOD

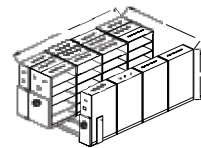
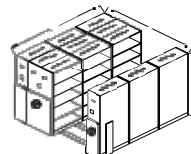
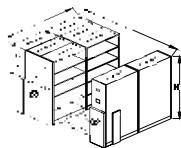
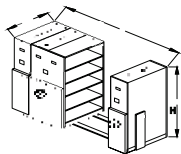


RT - 04

MATERIAL : CORIAN / MDF / MEMBRANE
PLY / ENGINEERING WOOD



Compactor



	1 BAY - 4 BODIES	2 BAY - 8 BODIES	3 BAY - 12 BODIES	4 BAY - 16 BODIES
Model No.	1 BAY - 4 BODIES	2 BAY - 8 BODIES	3 BAY - 12 BODIES	4 BAY - 16 BODIES
No. of Bodies	4	8	12	16
Description	1980(H) x 381/457(D) x 910(W)	1980(H) x 381/457(D) x 1820(W)	1980(H) x 381/457(D) x 2730(W)	1980(H)x381/457(D)x3640(W)
Area (mm)	2700 x 915 x 2100	2700 x 1830 x 2100	2700 x 2745 x 2100	2700 x 3660 x 2100
Bay / Shelves	1 BAY / 4 SHELVES, 5 loading levels	2 BAY / 4 SHELVES, 5 loading levels	3 BAY / 4 SHELVES, 5 loading levels	4 BAY / 4 SHELVES, 5 loading levels
Module	1+1+1	1+1+1	1+1+1	1+1+1

Dimension (In MM)



PT - 01
1800 x 900 mm
Material : SS 304



PT 02
Top : Dia 900 / 1200 MM
Material : Metal Powder Coated Tapered leg
with MFC Top



PT 02
Top : Dia 900 / 1200 MM
Material : Metal Powder Coated leg
with MFC Top

EDUCATION



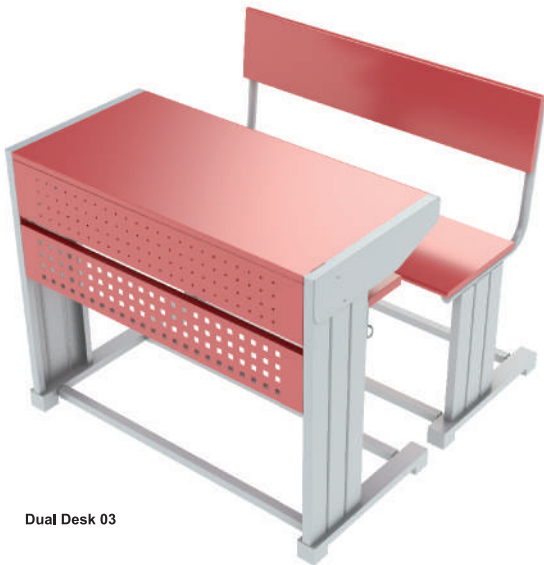
Educational Desk



Dual Desk 01



Dual Desk 02



Dual Desk 03



Dual Desk 04



Dual Desk 05

Material Sub Type :
Body : Metal Powder Coated Structure
Top / Seat / Back : Wood / MDF / Engineering Wood / Plywood
With Post Forming

Hostel Furniture



Hostel Furniture Set 01
Bed : 1800x900x650
Wardrobe : 900x600x1750



Hostel Furniture Set 02
Bed : 2000x900x450
Wardrobe : 900x450x1800

Bunk Bed



Bunk Bed 01
2000X900X1800



Bunk Bed 02
2000X900X1800

Tables



Computer Table - 01



Computer Table - 02



Computer Table - 03



Teacher Table - 04



Teacher Table - 05



Teacher Table - 05

Lockers



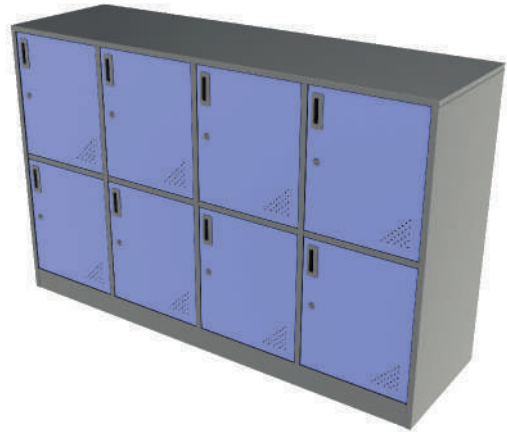
3 Door Locker
Material Subtype: Metal Powder Coater



4 Door Locker
Material Subtype: Metal Powder Coater



18 Door Locker
Material Subtype: Metal Powder Coater



8 Door Locker
Material Subtype: Metal Powder Coater



Small Almirah
1200 X 450 X 1200



Steel Storewell - Plain
915 X 480 X 1980



Wall Mounted Book Shelf
Material Subtype: Engineering Wood / MDF



Openable Storage
Material Subtype: Engineering Wood / MDF



Modular Overhead Storage
Material Subtype: Engineering Wood / MDF



Bookshelf 01
Material Subtype: Metal Powder Coated with Glass Door



Book Shelf Door 2 - Sliding Door
Material Subtype: Metal Powder Coated with Glass Door



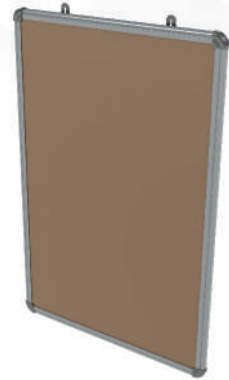
Filing Cabinet
Material Subtype: Engineering Wood / MDF



Lectern



White Board
450 x 600
900 x 600



Notice Board
450 x 600
900 x 600

Bench



3 Seater Bench SS

HEALTH-CARE





HB - 01 - HOSPITAL BED
W x D x H: 900W x 2030D x 500H



HB - 02 - HOSPITAL BED
L x W x H: 2220L x 1060W x 440-760H mm (Height Adjustable).



HB - 03 - HOSPITAL BED
W x D x H: 900W x 2030D x 500H



EXAMINATION TABLE (SIZES AVAILABLE)
L x D x H: 1835L x 505D x 770H



BSC - 01
W x D x H: 400W x 400D x 820H



BSC - 02
W x D x H: 400W x 400D x 820H



BSC - 03
W x D x H: 400W x 400D x 910H



BSC - 04
W x D x H: 400W x 400D x 820H



OBT - 01
W x D x H: 750W x 350D x 820/1050H



OBT - 02
W x D x H: 750W x 350D x 820/1050H



OBT - 03
W x D x H: 750W x 350D x 820/1050H





FS - 01
W x D x H: 450W x 450D x 450H



STOOL
W x D x H:



FS - 02
W x D x H: 400W x 275D x 210H



IV STAND-01 PORTABLE



IV STAND-02 FIXED



RETAIL





Cash Counter
Material Subtype: MDF & Corian



4 Way Browser
Material Subtype: MS & SS



Adjustable Parrot Stand
Material Subtype: MS, SS, MDF & Corian



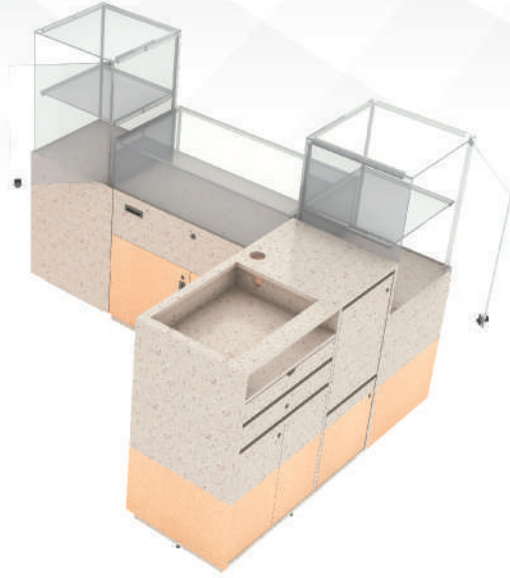
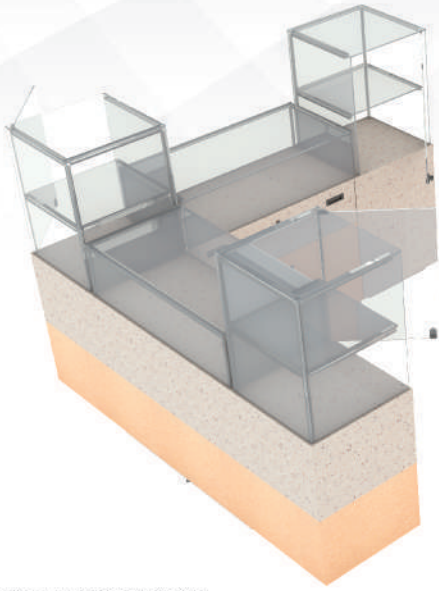
QUEUE BARRIER
Material Subtype: MS, SS & MDF



WALL FIXTURE 1
Material Subtype: MS, SS & MDF



WALL FIXTURE 2
Material Subtype: MS, SS & MDF



Display Counter - (Jewellery / Watch)
Material Subtype: MDF - Corian - Glass



Mid Floor Gondola
Material Subtype: Wood & Metal



Fruit & Vegetable Rack
Material Subtype: Wood & Metal



Mid Floor Gondola - 2
Material Subtype: Wood & Metal

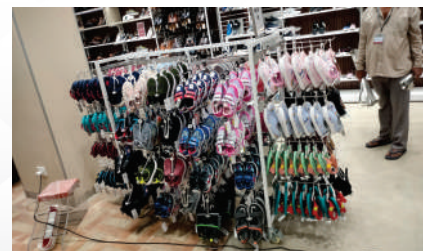


Mid Floor Gondola - 3
Material Subtype: Wood & Metal





Retail Installations



Steel Door



Steel Door 1 - 1200 x 2100 mm

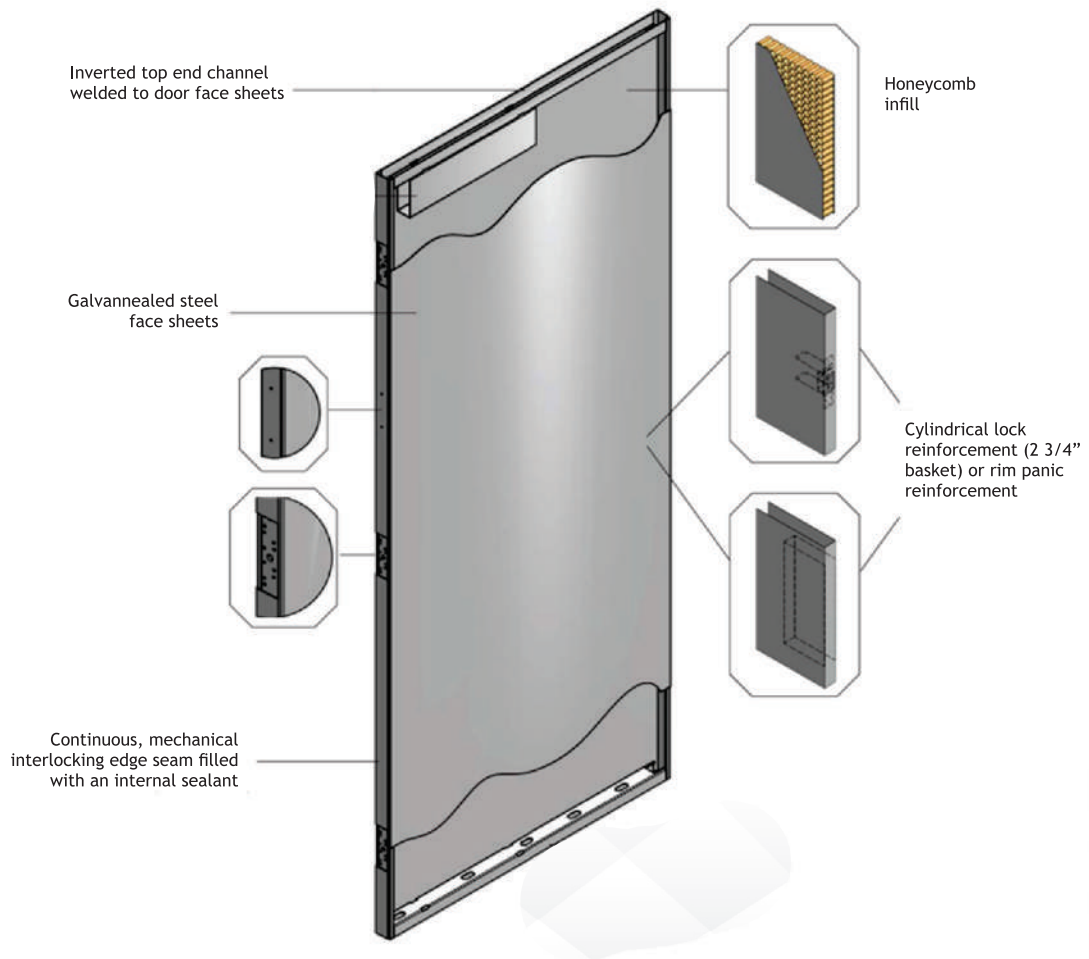


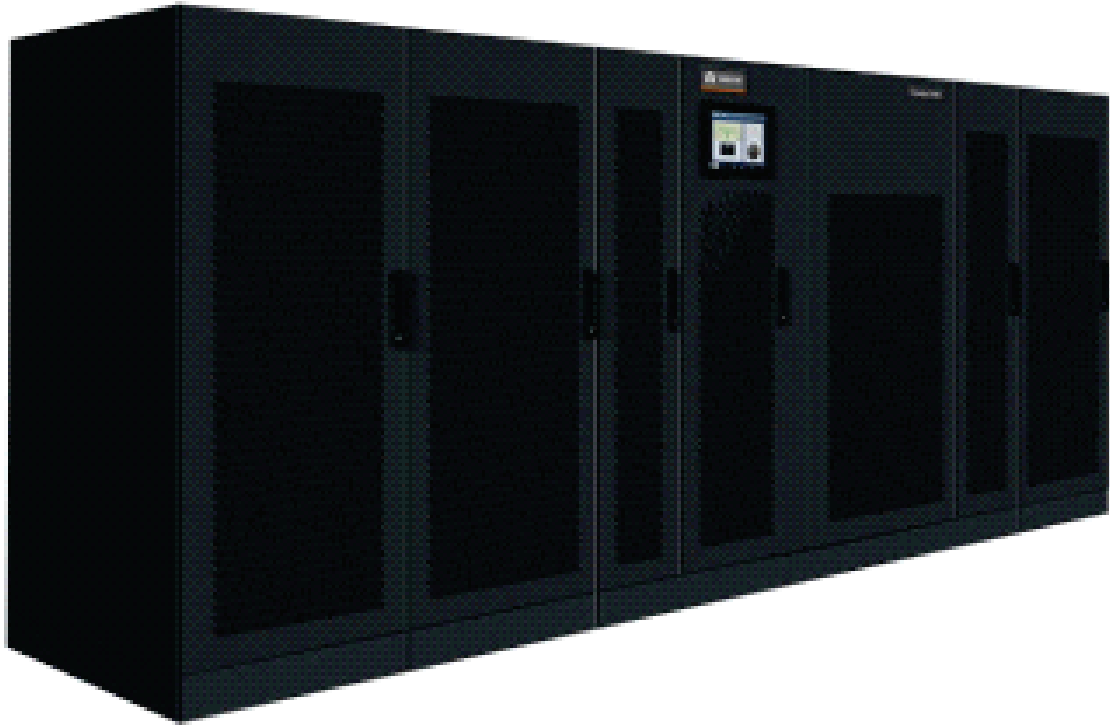
Steel Door 2 - 750 x 2100 mm



Steel Door 3 (Customized Size)

MATERIAL SPECIFICATION & DESCRIPTION :





UPS Racks



UPS Racks



Control Panel



Industrial Rack for Heavy Material Storage



Slotted Angle Rack

Description :
Upright - 40 x 40
Adjustable Shelf
Size - 900 x 450 x 1830 mm
750 x 450 x 1830 mm
UDL - 100 Kg / Shelf

Camping Furniture



Oversized Director Chair



Small Director Chair



Hard Arm Chair



Camping Storage



Folding Stool 01



Folding Stool 02



ZENITH METAPLAST (P) LTD.

Head Office : Nasik

Plot No F-18, MIDC, Satpur, Nashik - 422007,
Maharashtra, INDIA.

Contact : +91-9823900510

Email : rafeeq@zenithmetaplast.com

Corporate Office : Mumbai

406, 4th Floor, FILIX Tower, Bhandup (W) Mumbai - 78,
Maharashtra, INDIA.

Email : marketing@zenithmetaplast.com

Plant 1 : Nasik

Plot No E-18, MIDC, Malegaon, Sinnar, Nashik - 422103,
Maharashtra, INDIA.

Plant 2 : Nagpur

Plot No. J-16, Butibori Industrial Area, MIDC, Nagpur - 440022,
Maharashtra, INDIA.

Plant 3 : Mysore

Plot No 18-54, Koorgalli Industrial Area, Mysore - 570018
Karnataka, INDIA.